

# Viking 61

C o n v e r t i b l e



For those who demand the best.

## A fusion of beauty and brawn

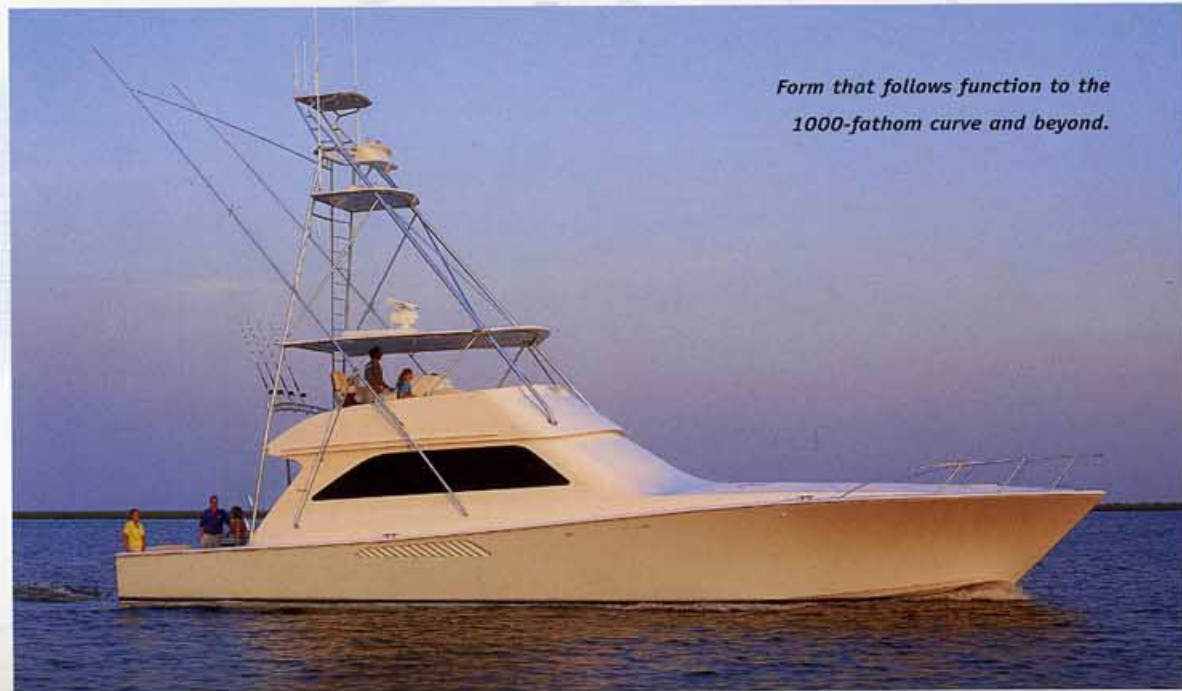
*Inward tapered cabinsides reduce cockpit backdraft to minimize exhaust fumes and spray.*

It's been a long morning in the deep, but then offshore fishing always is a waiting game. In the distance, a frigate bird hangs motionless high in the sky. Twisting the wheel to starboard, you troll over to look. Just ahead, a small rip catches your eye as the color sounder marks a nice surface water temperature break. You glance at the baits towing easily in the clean alleys of the wake. Suddenly, you notice something else. That mackerel on the long rigger appears to be swimming in a

large shadow. You glance upward but there isn't a cloud in the sky. And then you hear what you've been waiting for: "THERE HE IS! THERE HE IS!"

Welcome aboard the spectacular Viking 61 Convertible, one gorgeous fish-raising machine. Conceived by the most experienced design team in the industry, the Viking 61 Convertible is the antidote for fishless days. From bow to stern, she represents nearly four decades of

state-of-the-art engineering, performance and luxury. Fast and agile, her sharp, raked entry ignores head seas. Her generous flare and cupped chines bully spray downward and allows one-finger control in a following sea. The flying bridge defines the term command station and the cockpit has the muscle to make you a tournament champion. Inside, her magnificent salon and three- or four-stateroom layout is lush with amenities and craftsmanship that easily rival custom-built boats.



*Form that follows function to the 1000-fathom curve and beyond.*



*Whether entertaining a party of twelve, or cooling off after a hot day of sailfishing, the salon pampers you in palatial comfort. Professionally designed and decorated interiors create an ambiance of luxury, yet are durable for life at sea.*

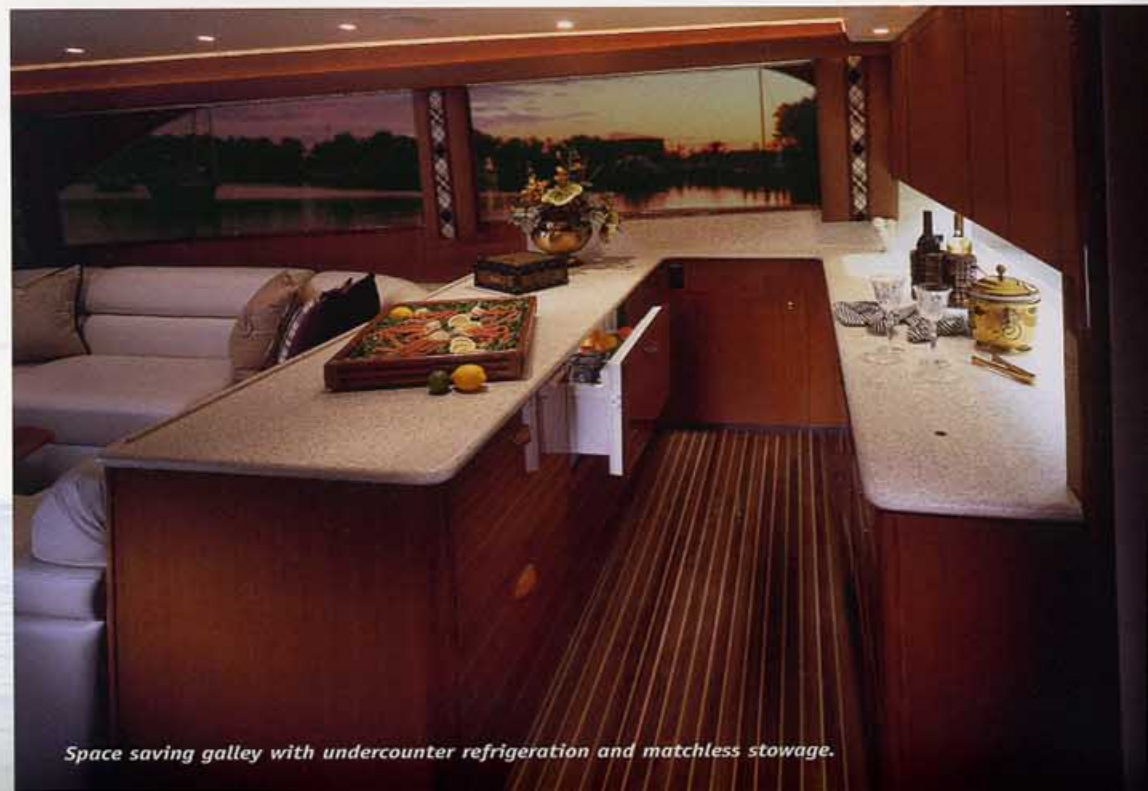
## Commitment to excellence

Frameless windows in the deckhouse provide excellent natural lighting and the dinette and settee are positioned to enhance the views at the dock and underway. Air conditioning circulates from hidden registers to cool quietly. The U-shaped galley is most effective in utilizing space and for simplifying meal preparation. Still, the Viking 61 Convertible improves upon the efficient design by adding deep-drawer, large capacity undercounter refrigeration and concealed appliances to create a sleek, low-profile environment that doesn't intrude into the salon. Convenient slide-out trays maximize stowage capacity behind yards of hand-finished teak joinery. Fiddles and rounded corners on the Corian countertops reflect Viking's attention to small details.

The standard plan offers three posh staterooms, each with an adjoining private head and a stall shower. The master stateroom features an athwartships king-size bed with designer shams and headboard, twin cedar-lined hanging closets with built-in shelves, an entertainment system and a plenitude of drawers and stowage lockers behind rich, varnished teak joinery. In the starboard stateroom, generous upper-and-lower berths promise restful nights for your guests and thoughtful amenities such as an ample hanging locker, deep drawers and individual air-conditioning controls are not overlooked. A queen-size bed is the focal point in the forward stateroom. A VIP plan also is offered with a double-size lower berth and a single upper.

In the four-stateroom arrangement, the starboard guest staterooms have upper-and-lower berths. The washer and dryer and central vacuum system are in the companionway in both versions.

Dinette



Space saving galley with undercounter refrigeration and matchless stowage.



Master Stateroom



Master Head



Available VIP arrangement



Starboard Stateroom



Forward Head

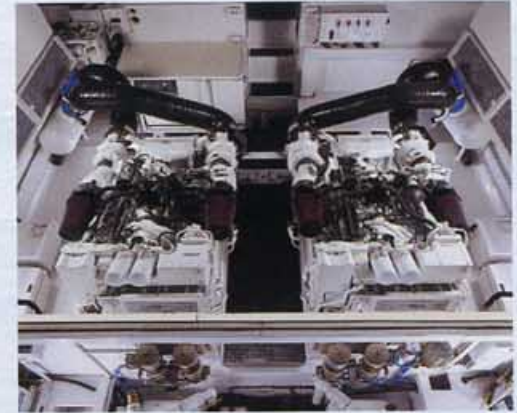
## The pinnacle of marine engineering

The helm is a work of technical art. Electronics are protected from the weather, yet are always visible and easily reached. A separate compartment houses communication gear. A large door provides access into the helm console to

service electrical and mechanical systems. Power-assisted hydraulic steering is standard and you can add single-lever controls and our tournament helm pod for a custom look. Husky grabrails are right where you need them. A centerline venturi

cutout on the bridge windscreen combined with low bridge sidewings provides 32-point visibility. Backing down, she will outdance any fish that swims or jumps. A climate-controlled enclosed bridge with forward and after stations and spiral staircase access from the salon also is available.

The 170-square-foot cockpit has the features to make even big fish quiver before the first line goes in the water. Tackle stowage, refrigerated step box, bait freezer, prep-center and engine room access are built into a molded console that also serves as an excellent place to ride shotgun between bites. Oval exhaust ports add a custom look to the transom and port and starboard Glendinning Cablemasters ease shorepower connections whether you are docked at the yacht club or alongside a wooden pier in Costa Rica.



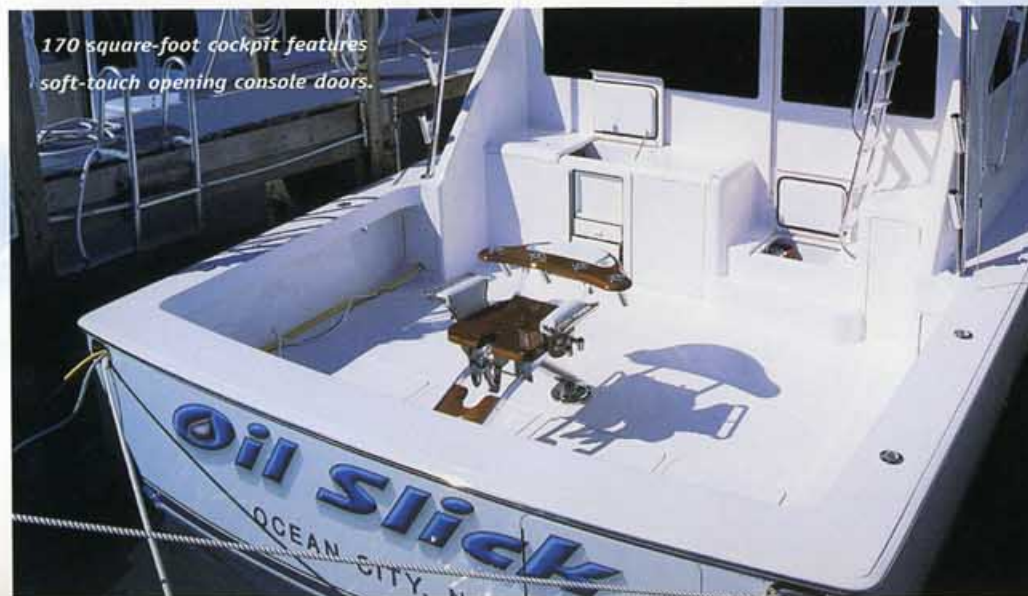
*Accessibility is standard equipment.*

Viking Yacht is an engineering-driven company. It clearly shows in the engine room, finished in gleaming white Awlgrip. Twin turbo-charged diesels are mounted on powder-coated, steel I-beam beds supported by dedicated transverse stringers, so the ride at 35 knots is as smooth as it is at trolling speeds. A composite salon floor and linear mufflers absorb machinery acoustics like water through sand. Accessibility to the mains and the generator is superb. An equipment room forward of the engines concentrates ancillaries in a convenient location to reduce clutter and enhance serviceability.

Our relentless pursuit to excellence is not a slogan, but is our philosophy. From numbered and color-coded wiring harnesses to the fiberglass fuel and water tanks, we fabricate over 90 percent of the components and systems that go into our yachts. We believe this is the best way to build a boat and invite you to visit your Viking dealer to test that belief for yourself.



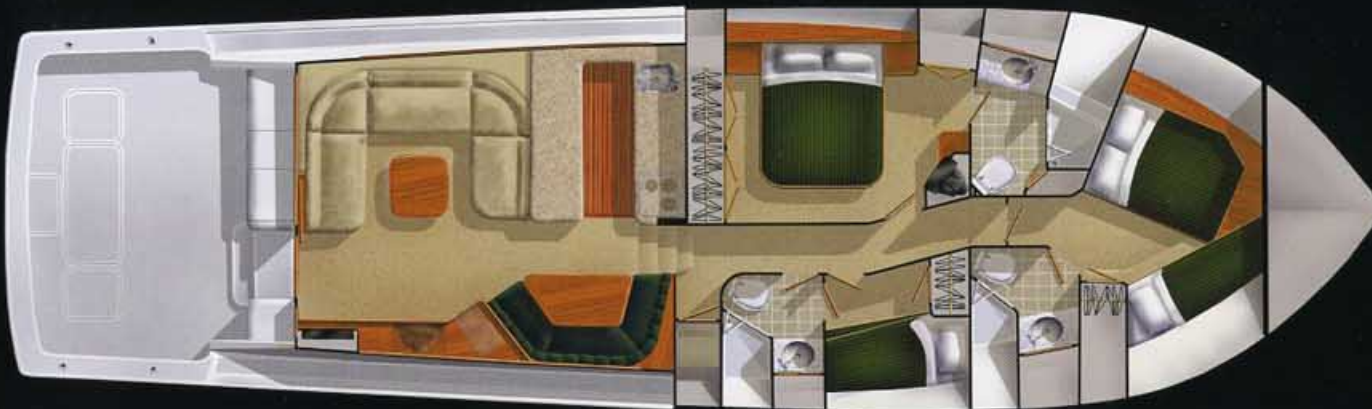
*Centerline venturi windshield cutout maximizes visibility.*



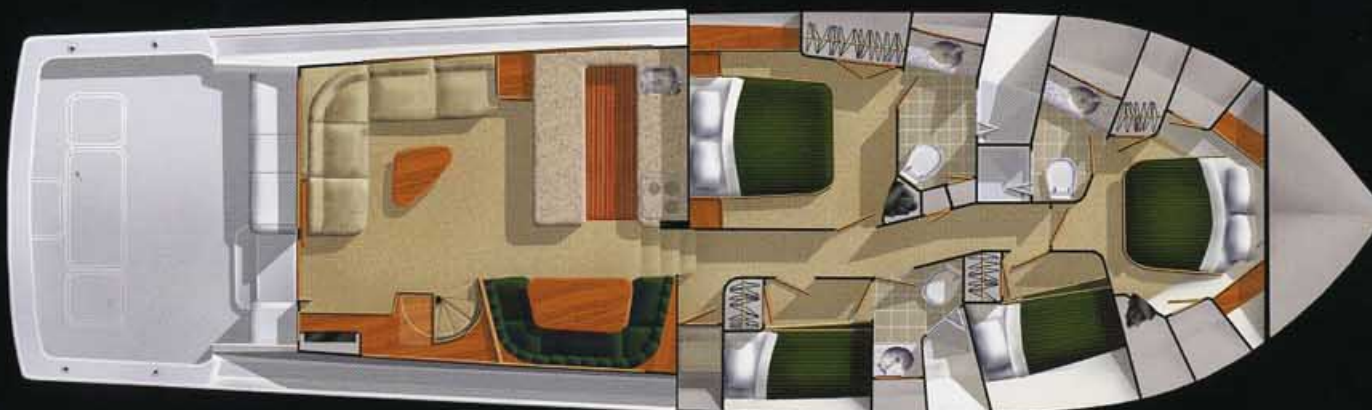
*170 square-foot cockpit features soft-touch opening console doors.*



**Pump Room**



The three-stateroom plan is the standard layout and includes a queen-size bed in the forward cabin. A VIP stateroom with a double lower and single upper berth also is available.



A spiral staircase is available in the Enclosed Bridge model. The four-stateroom arrangement has a queen-size berth forward, amidships master, and two staterooms with upper and lower berths.



## Viking 61 Convertible

Length, Overall (L.O.A.)	61 ft. 9 in. (18.82 m)
Length, Overall w/bow pulpit	65 ft. 11 in. (20.09 m)
Beam	18 ft. 2 in. (6.79 m)
Draft	5 ft. 4 in. (1.63 m)
Height above waterline (to masthead light)	20 ft. 8 in. (6.30 m)
Height above waterline (to flying bridge hardtop)	18 ft. 3 in. (5.56 m)
Gross Weight (wet)	82,000 lbs. (37,195 kg)
Fuel Capacity	1,800 gals. (6,813 l)
Water Capacity	310 gals. (1,173 l)
Cockpit Size	170 sq. ft.
Transom deadrise	15.5 degrees



 **viking**<sup>®</sup>  
yachts

For those who demand the best.

Route 9, On the Bass River, New Gretna, New Jersey 08224 U.S.A. • Tel (609) 296-6000 • Fax (609) 296-3956 • [www.vikingyachts.com](http://www.vikingyachts.com)

For full details and the name of the Viking dealer nearest you, contact Viking Yacht Company.

The right reserved to make changes, without notice, at any time, in equipment, materials, prices, and specifications. Accommodation drawings and photos may show some optional equipment.