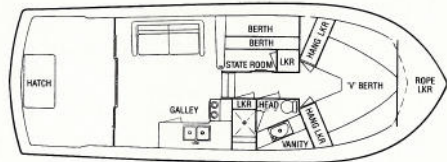


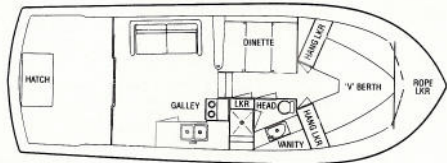
# VIKING 35'

CONVERTIBLE

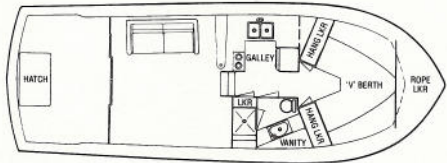




Plan A Stateroom



Plan A Dinette



Plan B

### DIMENSIONS

Length ..... 35'0" (10.67m)  
 Beam ..... 13'1" (3.99m)  
 Draft ..... 2'5" (.74m)  
 Freeboard, fwd ..... 5'8" (1.93m)  
 Freeboard, aft ..... 3'7" (1.1m)  
 Height, w/l to flybridge ..... 11'4" (3.45m)  
 Gross weight, approx. 20,000 lbs. (9,117kg)  
 Fuel capacity, std. .... 275 gal. (1,040.9l)  
 Water capacity, std. .... 90 gal. (340.7l)  
 Headroom ..... 6'4" (1.93m)

### CONSTRUCTION

Hand laid-up molded fiberglass hull, deck, deck house, and flybridge w/end-grain balsa core in hull sides, decks, and cabin top. Solid keel, strakes, and chines.

### MECHANICAL

Engines, twin 350 h.p. Crusader gasoline w/reduction gearing (diesel engines optional)  
 Engine alarm system, audible  
 Engine stringers, structural steel channels  
 Propellers, 3-blade  
 Rudders, manganese bronze  
 Shafts, stainless steel  
 Struts, manganese bronze  
 Trim tabs  
 Hydraulic steering



### FUEL AND WATER

Fuel lines, flexible aircraft type  
 Fuel manifold, w/filters and crossover valves  
 Fuel tanks, welded aluminum  
 Hot water heater  
 Water connection, dockside, w/pressure relief valve  
 Water lines, copper  
 Water system, pressurized  
 Water tanks, welded aluminum

### ELECTRICAL

Batteries, 6 volt (4), w/fiberglass box  
 Battery paralleling switch, vapor-proof  
 Battery charger  
 Bilge blowers  
 Bilge pumps, automatic, w/indicator light (3)  
 Bonded electrical system  
 Color-coded wiring systems  
 Dockside electrical system w/two 50' cords  
 Engine room light  
 Generator  
 Horn, dual air  
 Lights, interior, combination 12V/120V throughout  
 Master control panel, w/12V and 120V circuit breakers, AC master control switch, voltmeter, polarity light  
 Navigation lights

### FLYBRIDGE

Compass

Covers, Dacron, for instrumentation and helm seat  
 Dual clutch and throttle controls  
 Full instrumentation  
 Hand rails, stainless steel  
 Lockers  
 Seat, pedestal helm  
 Windshield, venturi-type

### SALON

Carpeting throughout  
 Convertible sofa  
 Chair, upholstered  
 Lighting, indirect  
 Windows, sliding, w/screens  
 Screen doors

### GALLEY

Electric range, 3-burner, w/oven  
 Exhaust fan (plan B)  
 Indirect fluorescent lighting (plan B)  
 Refrigerator/freezer  
 Silverware and utensil drawers  
 Sink, stainless steel

### DINETTE INTERIOR (Optional)

Face-to-face upholstered dinette, w/table and storage lockers, converts to bed

### MASTER STATEROOM INTERIOR (Optional)

Berths, upper and lower

Carpeting throughout  
 Hanging locker and drawers

### FORWARD STATEROOM

Carpeting  
 Hanging lockers and drawers  
 Port lights, w/screens  
 V-berths

### HEAD

Vanity  
 Electric toilet w/holding tank  
 Stall shower

### COCKPIT

Area 8' x 10' (2.44m x 3.05m)  
 Depth 2'2" (.66m)  
 Recessed cleats and hawser pipes  
 Recessed storage box  
 Side lockers  
 Teak cockpit ladder

### MISCELLANEOUS

Anchor, 15 lb., chain & line  
 Bow chocks and cleats  
 Bow rail, stainless steel  
 Dock lines  
 Drapes throughout  
 Fire protection system  
 Fire extinguishers (2)  
 Flag staff and ensign  
 Fog bell  
 Life jackets (6)  
 Non-skid decks fore and aft  
 Safety glass, all windows  
 Screens on all opening windows and port lights  
 Spring line cleats (4)

Viking Yacht Company reserves the right to make changes to the specifications, standard equipment, materials and optional equipment offerings at any time and without prior notice. Information contained herein is based on the most complete information available at the time of publication.



Route 9 & The Garden State Parkway  
 New Gretna, N.J. 08224  
 609-296-6006