

V I K I N G Y A C H T S



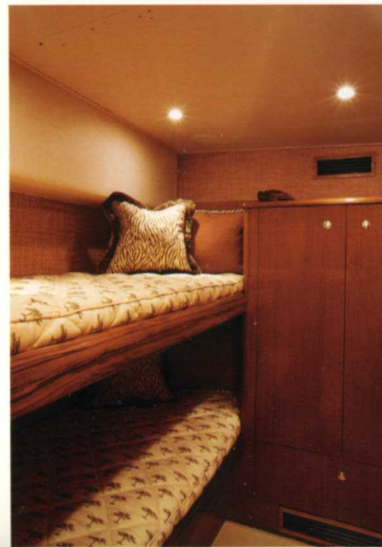
4 5 C O N V E R T I B L E

## Baby Grand

The exciting Viking 45 Convertible is strong on off-shore performance. With a raked stem, deep forefoot and sweeping sheer, its aggressive profile belies an elegant interior hand-crafted for lavish lifestyles.

The wide beam creates an engaging salon with a forest of lush teak joinery, rich designer fabrics and painstaking attention to detail. Rods stow handily below the convertible L-shaped sofa. Frameless windows are capped with upholstered valances, which conceal the air-conditioning registers for even distribution of the cool air. Undercounter deep-drawer refrigeration, concealed appliances, solid surface countertops and a convenient dinette merge flair with practicality.

Each large, well-appointed stateroom is served by a private head and stall shower.



*distinctive*

## Mettle Spoken Here

Sharing the engineering attributes of its larger siblings, the 45 C has powder-coated structural steel web frame engine beds, which are secured to dedicated transverse composite bulkheads to isolate vibration and maintain drive-train alignment. An exhaustive standard equipment list includes power-assisted hydraulic steering, an engine synchronizer, fiberglass tankage and high-speed stainless-steel rudders.

We cordially invite you to contact your Viking dealer to arrange a sea trial and a visit to our 550,000 square-foot modern facility on the beautiful Bass River near Atlantic City, NJ.



*The 119 square-foot cockpit features tackle stowage, a bait freezer, a chill box in the salon step and insulated wells for fish and live bait. Molded nonslip provides solid traction yet is easy to clean and a one-piece aluminum ladder provides secure access to the flying bridge. Visibility from the bridge is exceptional. Electronics stow neatly and safely in weather protected consoles.*



### 45 Convertible Specifications

Length, Overall (L.O.A.)	45 ft. 10 in.	(14.88 m)
Beam	16 ft. 4 in.	(4.98 m)
Draft	4 ft. 6 in.	(1.37 m)
Gross Weight (wet)	50,550 lbs.	(22,929 kg)
Fuel Capacity	665 gals.	(2,517 l)
Water Capacity	150 gals.	(567 l)
Cockpit Size	119 sq. ft.	

*responsive*



*distinctive*

*impressive*

*memorable*



For those who demand the best.

*responsive*

Route 9, On the Bass River, New Gretna, New Jersey 08224 U.S.A. • Tel (609) 296-6000 • Fax (609) 296-3956 • [www.vikingyachts.com](http://www.vikingyachts.com)  
For full details and the name of the Viking dealer nearest you, contact Viking Yacht Company.



## 45' Convertible Specifications

viking		— YACHT COMPANY — NEW GRETN, NEW JERSEY			
TITLE		VIKING 45' CONVERTIBLE			
SCALE	N/A	CAD	ENG	CKD	APR
DATE	8/1/08 - 1/31/09			DWG No.	REV



## 45' Convertible

### Length, overall (L.O.A.)

45' 10" (13.97 meters)

### Length, overall (including bow pulpit)

49' 7" (15.11 meters)

### Waterline length (L.O.W.)

40' 0" (12.19 meters)

### Beam

16' 4" (4.99 meters)

### Deadrise (at transom)

15°

### Draft (X)

4' 6" (1.37 meters)

### Freeboard, forward (X)

5' 6" (1.68 meters)

### Freeboard, aft (X)

2' 10" (0.86 meters)

### Height, waterline to top of: console (X)

13' 2" (4.01 meters)

### hardtop (X)

16' 4" (4.99 meters)

### masthead light (X)

19' 4" (5.89 meters)

### Gross weight (standard fuel load) (D)(X)

49,750 pounds (22,566 kilograms)

### Fuel capacity (B)

848 gallons (3,210 liters)

### Water capacity (B)

150 gallons (568 liters)

### Holding tank capacity (B)

50 gallons (190 liters)

### Cockpit area

119 square feet (11.06 square meters)

## CONSTRUCTION

- Ablative/Copolymer anti-fouling bottom paint, 2 coats, primed
- Awlgrip engine room, lazarette, forward bilge and anchor locker for enhanced visibility and easier maintenance
- Blister resistant modified epoxy resin in entire hull skin
- Custom blended polyester resin used in structural laminates, top-sides, bridges, and hardtops
- Dockside and overboard pump outs for holding tanks
- Hatches, three (3) Bomar, fore-deck hatches with Ocean Air screen shade system
- High-gloss, teak interior finish throughout
- High performance isophthalic gelcoat npg superior gloss, flexibility and outstanding weathering characteristics
- Hull interior, isophthalic gelcoat top-coated with a durable high gloss polyurethane coating
- Infused fiberglass fuel and holding tanks, with fiberglass baffles inside and balsa coring on sides for stiffness, sealed to hull with resin foam
- Laminated end-grain balsa core in hull side and top-sides
- Molded fiberglass salon floor/engine room ceiling with Divynicell core for acoustical and thermal insulation
- Solid reinforced keel
- Stringers, fiberglass encapsulated foam
- Vacuum bagged composite bulkheads – Main engine room bulkhead, intermediate engine room bulkheads, and forward bulkhead

## MECHANICAL

- Air conditioning – zoned with reverse cycle heat for complete climate control throughout the interior and with individual temperature controls for staterooms
- Bilge pumps with additional clean out pumps in keel area linked into monitoring system and connected to float switches for automatic and manual operation
- "Delta T" engine room ventilation system with supply and discharge fans for proper fresh air supply and water intrusion suppression
- D/C pressurized fresh water system with on deck fresh water fill and cockpit dockside supply inlet with pressure reducing valve

## FLYING BRIDGE

- Bridge installed without exposed fasteners
- Connection lug for single side band grounding
- Controls: Top-mounted single lever electronic controls with station select and keypad
- Electronics box lids drilled and tapped for gas pistons instead of thru bolts
- Extended overhang for extra room to move around behind helm and companion seats with anodized aluminum aft railing
- Fire system control with automatic and manual discharge and override system located at console
- Freshwater outlet
- Fuel gauge located in cabinet at console
- Gauges/electronic displays supplied by engine manufacturer
- Handrails, powder-coated aluminum effectively positioned above ladder to bridge and at helm
- Helm seat, companion seat, Murray Product, teak, ladder back with 4" pedestals and removable cushions and covers, adjustable
- Instrumentation based on standard engine package, lighted with switches in radio box
- Lighted compass, large and flush-mounted on centerline
- L-shaped lounge to port, straight lounge to starboard, with vinyl covered foam cushions, hinged for access to storage underneath
- Manual engine shutdown switches at cabinet in console
- Moritz safety monitoring system with audible and visible alarms: fire, engine room temperature, high bilge water, high exhaust temperature, high coolant temperature, low oil pressure, and generator as well as confirming correct system operation
- Nonskid deck for traction and durability
- Power assist hydraulic steering with steering junction block under helm for future stations/autopilot
- Recessed electronics boxes in console for custom electronics package that is easily viewable and protected from the elements by acrylic fitted lids with gaskets and stainless steel gas pistons
- Recessed radio box, large radio box on port side of console with switch panel inside
- Safety rail at entrance hatch to flybridge, anodized aluminum

## SALON (continued)

- Majilite headliner, natural color, 1/8" foam & tricot backing
- Sliding salon door, molded fiberglass door with window and teak interior finish, with positive catch when opened and key lock
- Teak cabinetry with drawers
- Teak trim where Amtico floor meets carpet
- Teak valances
- Upholstery and window treatments
- Varnished teak on aft face of galley island and dinette
- Vinyl Amtico flooring at salon door entrance

## GALLEY/DINETTE

- Dinette couch with removable cushions and storage room underneath
- Dinette table, teak, high-gloss finish with single pedestal, thru-bolted
- Electrical sub-panel for galley appliances
- Electric range, 3-burner, recessed in countertop with Corian lids and automatic shut off switch when lids are in place
- Exhaust fan, high velocity
- Galley countertop, high-gloss bone-color Corian
- Garbage disposal in sink
- Lights, overhead Xenon lights and fluorescent lighting
- Majilite headliner, natural color, 1/8" foam & tricot backing
- Microwave/convection oven located in upper galley cabinet above sink
- Refrigerator and freezer, Sub-Zero, large capacity, deep-drawer under-counter style with varnished teak faces
- Sink, bone-color Corian recessed in countertop with biscuit galley faucet
- Storage cabinets in upper galley, varnished teak doors with deep, pull-out drawers with aircraft style slides for smooth movement and latches to keep drawers in place while underway
- Storage cabinets and drawers in lower galley, varnished teak doors and faces with stowage for stove lids, utensils, and other items
- Vinyl Amtico floor
- Water tank level gauge and pump indicator located in galley sub-panel





## 45' Convertible

### Notations:

---

---

---

---

---

---

---

---

---

---

---

---

---

---

---

---

---

---

---

---

---

---

---

---

---

---

- Water heater – dual element, quick recovery, electric
- Y-valve emergency bilge pumps, (2)

### ELECTRICAL

- 24V DC ship's service throughout
- 24V/12V power supply with breakers on flybridge for future electronics
- 110V outlet in engine room on aft bulkhead
- Anchor light/navigation lights
- Batteries, (2) independent 24V banks mounted in fiberglass storage boxes
- Battery chargers, (2) with thermal cutoff and switching system for complete integration
- Battery distribution panel with battery cutoff and charging system breakers
- Battery parallel system for main engines and generator start
- Bonded electrical system with ground plate
- Color-coded, labeled and numbered wiring system with corresponding drawings
- Dimmers AC interior lighting throughout excluding the companionway
- Engine room lights, AC and DC with switch at engine room entrance
- Generator, Diesel, 17.5 kW, E-QD (electronic quiet diesel) Series, user-friendly with electronic governing allowing voltage and electronic frequency control
- Glendinning cablemaster, (1) with 3 wire grounded cord
- Instrument panel lights for flybridge and main electric panel
- Lighting, overhead Xenon lights recessed in ceiling and rope type décor lights concealed by upholstered valences, 24V and 120V throughout
- Master electrical control panel located in salon with 24V/120V circuit breakers, individual switching for shore 1, or generator supply and gauges for electrical supply, voltmeter, ampmeter, and frequency
- Receptacles, 120V duplex with GFI throughout
- Sub-panel located in galley with breakers for galley appliances, and galley lights and with gauge for water tank and alarm panel for safety monitoring system
- Voltage stabilizer isolation transformers for more consistent, cleaner voltage

- Molded in tackle center with bait prep station featuring cutting board with custom fitted lid, tackle cabinet with pullout drawers and push release door below and large, deep drop-in freezer to port
- Recessed in-deck fishbox, insulated and removable with pump out and drain plate with large holes for easy pump out and cleaning
- Rod holders, Rupp (4) stainless steel and flush-mounted
- Rounded cockpit coaming for comfort
- Salon door, molded fiberglass sliding door with frameless window and teak interior
- Sea water wash down with pump in engine room and supply at cabinet under forward gunwale to keep deck clean while fishing
- Self bailing cockpit with large cockpit scuppers
- Stainless steel cleats and recessed hawse pipes
- Stainless steel gas springs on all hatches and lids
- Stereo speakers powered from salon stereo with volume control
- Storage locker with shelf and push release door molded in at starboard side of salon steps
- Straps with padding to keep engine room door and transom door and gate open
- Transom swim steps at transom door
- Walk-through transom door with lift gate
- Y-valve for fresh and saltwater wash down

### SALON

- Air conditioning with reverse cycle heat with temperature control that circulates from hidden registers behind the valences to maximize comfort while minimizing noise and drafts
- Carpeting, wall-to-wall with lead lined padding for sound absorption
- Cocktail table, teak, high-gloss finish
- Fixed, frameless side windows with tinted, tempered glass for style, natural lighting, and privacy
- Home theater system with Sharp 37" LCD TV, Bose LS 18 FM stereo, DVD/CD player, with Sony DVD/VCP combo with surround sound with powered subwoofer
- Lambrequins - Teak frame with fabric upholstery
- L-shaped lounge with rod storage underneath
- Lighting, overhead Xenon lights recessed in headliner and indirect decorative rope lighting behind valences, 120V AC and 24V DC
- Main electrical service panel, AC/DC, backlit for easier viewing

- Stereo speakers recessed in soffit tied into salon stereo with volume control
- Storage drawer located under hanging locker
- Upper and lower berths, wide bunks with lift up lower bunk top and storage underneath

### MASTER AND PORT HEADS

- Air conditioning/heat with vent in soffit
- Electric heads
- Exhaust fan with vent soffit
- Linen storage
- Lower vanity with teak face
- Lights, overhead Xenon lights recessed in soffit and in ceiling
- Medicine cabinet with mirrored doors
- One-piece molded bone Corian countertop with rounded edges and with sink with satin nickel faucet
- Receptacle, 120V
- Shower light
- Stall shower, fiberglass with satin nickel shower fixtures and with drain to automatic sump pump in bilge
- Towel bar and ring – satin nickel
- Vinyl floor

### MISCELLANEOUS

- Anchor – constructed with a high-tensile, corrosion resistant aluminum magnesium alloy
- Anchor locker with access from foredeck
- Anchor rode
- Awlgrip bilge areas with access hatches, snow white and lighted using magnetic switches for easier maintenance and cleaning
- Bow pulpit, molded fiberglass with nonskid and stainless steel anchor shoot
- Bow rail, anodized aluminum, brushed finish
- Fire extinguishers, (5)
- Grabrails, powder-coated aluminum and mounted to both sides of bridge for safe access to foredeck
- Mooring lines, 3 strand, nylon (6)
- Recessed covers on transom to protect trim tab pistons
- SSB grounded shield
- Stainless steel bow, spring and stern cleats thru-bolted to aluminum backing plates
- Water delivery kit (N) with tool set
- Wrapped hatch carpet installation
- Zinc on transom





## 45' Convertible

### NOTES:

This specification sheet is subject to change.

- A** The right is reserved to make changes, without notice, at any time, in equipment, materials, prices and specifications. Line drawings and photos may show some optional equipment.
- B** Capacities of tanks are estimates and usable volume will vary depending upon conditions.
- C** These prices apply only if order is placed prior to boat going into production. Prices are for standard installation only. Custom work is extra cost.
- D** Weight shown is calculated with fuel and water tanks full.
- E** Prices available through Dealer.
- H** Includes credit for standard.
- J** Must be ordered 90 days prior to start date.
- K** Requires F/B hardtop.
- N** Includes life jackets (6 adult), life ring (21'), flare kit, fenders: 10" (2), engine oil, deck mop, deck brush, bucket, hose, nozzle, fuel filters: engine and generator, raw water pump impeller for main engine (1), boat soap (1 qt.) and bilge cleaner (1 qt.).
- R** Generator is not intended to supply power for all standard and optional accessories. Load must be limited to generator output rating.
- S** In order to offer the full range of decor, selections are required with initial order.
- V** Includes 12V lighting and cockpit flood lighting.
- W** Standard metal pump will prime injection pump.
- X** Measured with largest engines available, full fuel and full water.

## OPTIONAL EQUIPMENT (A) (C) (S)

**STANDARD POWER:** MAN V8 900CRM:900MHP

**SATIN INTERIOR FINISH THROUGHOUT** ..... N/C

### COCKPIT

Livewell in cockpit sole .....	1,850
Outriggers, Rupp w/spreaders .....	8,335
Refrigerated step box .....	1,960
Swim platform & ladder .....	4,940
Transom custom lettering .....	POR
Transom std. lettering .....	975
Transom mounted fish box .....	2,800

### DECK/EXTERIOR

Bow pulpit removal .....	3,335
Bow thruster (DC) .....	14,255
Custom hull color .....	12,800
Davit (1,100 lbs.) .....	25,695
Fender racks .....	1,045
Salon forward window mask .....	12,940
Windlass, Lewmar V2SS w/50' chain, 250' rope .....	4,695

### DECOR(S)

Applied bedspread and shams, MSR (IPO STD) .....	550
Custom decor (H) .....	POR
Decor mini accessory kit .....	5,050
Decor maxi accessory kit .....	7,700
Luxury edition .....	5,950
Premier edition .....	12,900
Sofa, upgraded style .....	POR
Mirror ceiling in heads, each .....	2,935
Wall covering, custom (J) .....	POR

### FLYING BRIDGE

Air conditioning .....	12,400
Center rigger (K) .....	1,070
Custom helm pod w/chrome wheel .....	4,260
Electronic single lever controls for pod .....	2,320
Electronic trolling valves .....	4,260
Jump seat backrest .....	975
Hardtop .....	28,040
4 sided enclosure (K) .....	9,935
Costa Clear (K) .....	POR
Lights, remote spotlight (K) .....	1,935
(6) Rod rocket launcher (K) .....	1,100

### COMPANIONWAY

Washer and dryer .....	2,595
------------------------	-------

### SALON

Bose LS48 .....	3,190
Carpet runner full .....	1,040
Carpet runner partial .....	590
Carpet runner - companionway and steps .....	860
Table, cocktail hi/low .....	2,075

### MASTER STATEROOM

Electronic safe under bed .....	2,600
Stereo/CD player, (12V) .....	860
Telephone (additional outlet) each .....	365

### GUEST STATEROOM - PORT

Stereo/CD player, (12V) .....	860
Telephone (additional outlet) each .....	365
Television (outlet only) each .....	485
TV, 20" color flat screen .....	1,600

### DELIVERY

Fuel & freight (E) .....	POR
Propellers, (spare) and removal/installation tool .....	19,730
Truck packing .....	4,190

### ENGINE ROOM

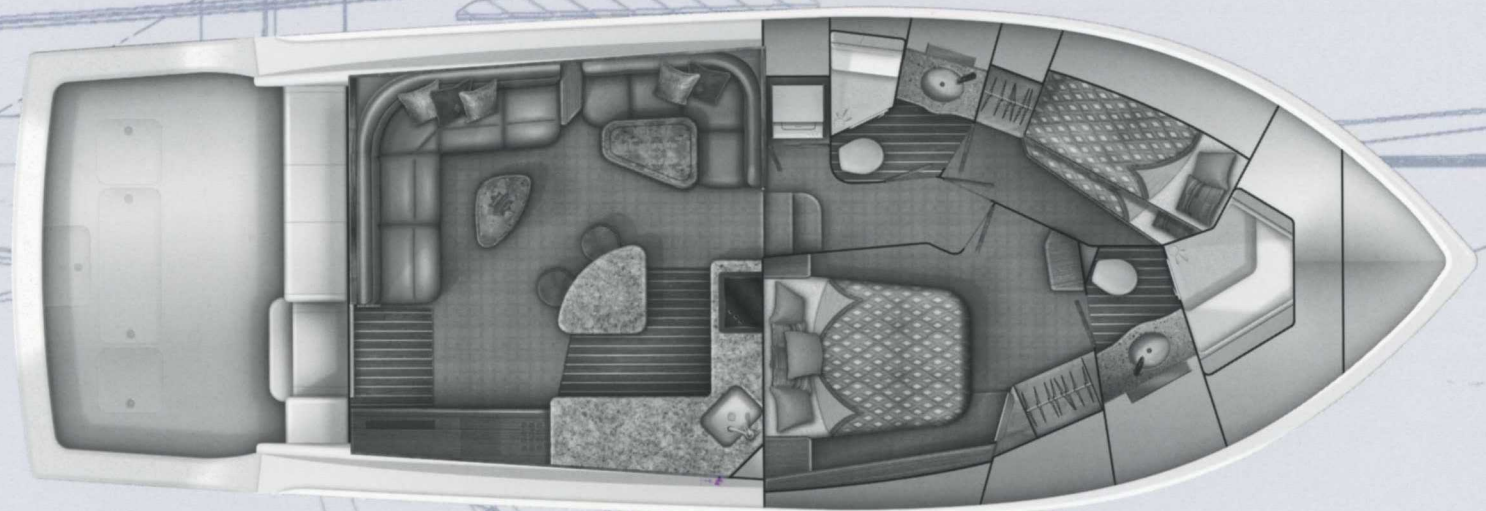
Eskimo Ice Machine .....	14,250 NET
Water maker, 700 GPD w/auto backflush and flybridge control panel .....	15,920



## 45' Convertible

### VIKING YACHTS ONE YEAR LIMITED WARRANTY

Viking provides a 12 month limited warranty to the original purchaser. Certain restrictions apply. Ask your dealer for a copy.



**Standard 2 Stateroom Layout**

FWD FUEL TANK

Route 9 "On the Bass River"  
New Gretna, NJ 08224

(609) 296-6000  
(609) 296-3956 Fax

[www.VikingYachts.com](http://www.VikingYachts.com)